

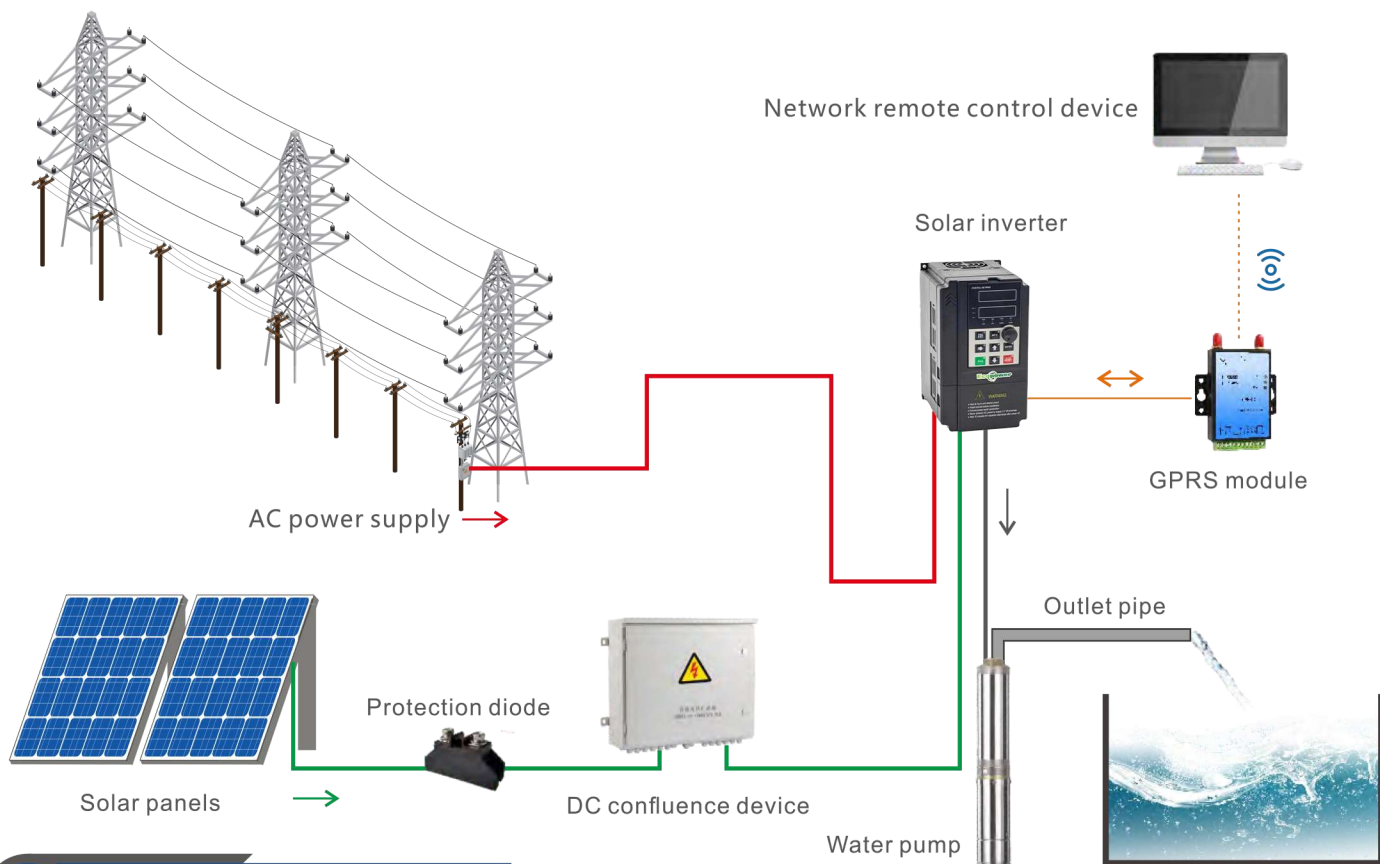
EP 15-SP series solar inverter is high-efficiency solar water pump controller, which with high MPPT efficiency, green environmental protection, economic and energy saving, widely use for agricultural irrigation, water supply system and etc.



EP15 Products Feature

EP 15-SP

- ▶ Support voltage and power range: Single phase or three phase 220V, Three phase 380V; Power is from 0.75kW to 400KW.
- ▶ Easy to use, built in water pump protection functions.
- ▶ The water level detection functions, which can support terminal /analog detection.
- ▶ PV power, PV current, pump flow rate and other operating parameters are accurately displayed.
- ▶ All series of products can realize the switching of AC power supply or PV power supply to meet the 24-hour work;
- ▶ Accurate and fast MPPT algorithm tracking PV battery maximum power point, ensure 99% solar power tracking efficiency.
- ▶ Support for basic function of inverters, such as terminal control start and stop, RS485 communication, which can remote operation and monitoring.
- ▶ Battery-free design, suitable for various applications, easy to maintain.
- ▶ Perfect protection function: with automatic dormancy function, low frequency protection, overcurrent, overload protection and other protection functions, can effectively prolong the product life.



EP15 Specification Model

EP 15-SP

Model		EP 15-SP1																										
		d75	1d5	2d2	004	5d5	7d5	011	015	018	022	030	037	045														
Input	Min. Input voltage	120V DC																										
	Max. Input voltage	450V DC																										
	MPPT range	250~450V DC																										
Output	Output voltage	3PH 220V AC																										
	Rated current(A)	3.8	5.1	9	13	25	32	45	60	75	91	112	150	176														
	Adapted motor(KW)	0.75	1.5	2.2	4	5.5	7.5	11	15	18.5	22	30	37	45														
Model		EP 15-SP3																										
		d75	1d5	2d2	004	5d5	7d5	011	015	018	022	030	037	045	055	075	090	110	132	160	200	220	250	280	315	355	400	
Input	Min. Input voltage	280V DC																										
	Max. Input voltage	800V DC																										
	MPPT range	350~800V DC																										
Output	Output voltage	3PH 380V AC																										
	Rated current(A)	2.1	3.8	5.1	9	13	17	25	32	37	45	60	75	91	112	150	176	210	253	304	377	426	465	520	585	650	725	
	Adapted motor(KW)	0.75	1.5	2.2	4	5.5	7.5	11	15	18.5	22	30	37	45	55	75	90	110	132	160	200	220	250	280	315	355	400	
Output frequency		0~50/60Hz																										
Altitude		Lower than 1000m																										
Ambient temperature		- 10℃~40℃(ambient temperation at 40℃~50℃, please keep derated use)																										
Storage temperature		- 20℃~60℃																										
Humidity		Less than 95%RH, without condensing																										
Vibration		Less than 5.9 m/s2 (0.6 g)																										
Protection level		IP20																										

ECO SOLAR CO., LTD

Address: 62, Lam Thi Ho Street, Trung My Tay Ward, Ho Chi Minh City, Vietnam

Tel: +84 909 296 297

Web: www.ecopower.vn

E-mail: congtyecosolar@gmail.com

